

Step by step guide to editing the People's Map

1. Login or register

[login](#)[signup](#)

You can browse the People's Map without having to login, but to edit the map, you have to be registered as an editor. If you have not already done so, please take a few minutes to create a login account.

2. Search for the road, town or post code you are interested in

Now that you are logged in as an editor, you can search for the area known to you where you want to add or edit an existing feature by searching by road, town or post code. If searched by place name, the map will show the whole town, but when searched by postcode, the map will zoom into the specific post code area. Once you have located a general area, you can skip between the aerial photography and the People's Map to recognize features of the area you are familiar with.

3. Notes before you start editing the map

People's Map allows the registered user to create and edit map features such as:

- Roads – All type of roads, cycling and walking paths
- Points of interests – Towns, Hospitals, Car parks, Sport Fields, Churches, etc
- Areas – Parks, Lakes, Buildings, Airports, Rivers, etc

3.1) Map layers

There are four map layers displayed in the People's Map:

1. The Aerial Photography – Used as the base to create/edit data on.
2. The Peoples Map - The verified People's Map
3. Unverified Peoples Map – This layer shows both the verified and unverified data.
4. Out of Copyright Map - This map can be used as guidance when digitizing new roads



3.2) Map Modes

There are two map modes, View and Edit, in the People’s Map website that both contain four the map layers.

“View” mode



The “view” mode allows you to view all the maps and aerial photography, but you will not be allowed to perform any edits until you are registered.

Please note that the map tool bar only gives you certain navigational options.

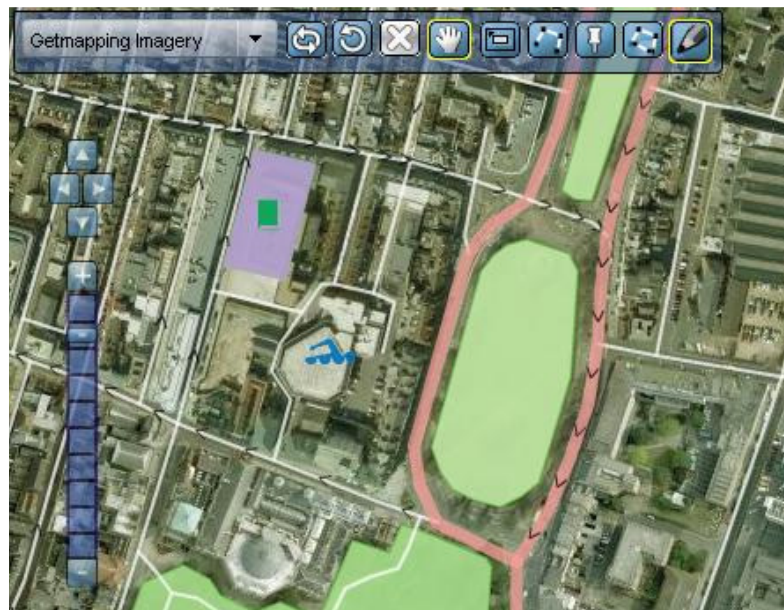


“Edit” mode



The “edit” browser is where the actual editing of data is performed.

To activate the edit mode, press the pencil button on the map toolbar. To view this editable data, zoom in to one of the 5 closest zoom levels and the data will load on top of the aerial imagery.

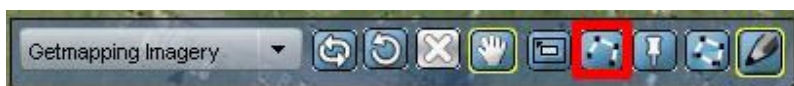


4. Create or edit a road

4.1 Identify a road you wish to change or add

You should first identify a road in the aerial image that you are familiar with and would like to add or edit (you can check this by flipping between the aerial images and the map). **Please note** - only change or add roads that you personally know. Using other map sources is not allowed, unless it is out of copyright.

4.2 Use the editing tools to add or change a road



Click on the "Add road feature" button in the expandable dialogue, find the beginning of the road and click once on it with your left mouse cursor. This will add a point to the map. Follow the length of the road, clicking as often as necessary to represent the curves. Continue along the road in this manner, adding enough points so that the line you are creating fits nicely along the road in the aerial image. When you come to the end of the road, double click the left mouse button to finish the road.

- Roads can be edited by selecting the road so that it is highlighted in yellow, then the red nodes can be moved to a new location or snapped to another node.
- New nodes can also be added to a road by clicking and dragging the mouse cursor on the area of the road you wish to add the node.
- Existing road end nodes can be dragged and snapped to other road nodes.

4.3 Provide the name and details of the road



New Road

Type

Name

Road #

Level

Direction

Click on the 'OK' button to finish adding the Road.

Roads Attributes List

Once you double-click the mouse button to indicate that you have finished digitizing a road, a dialog box will pop up, prompting you to add road details, such as what type of a road it is, and the name of the road. Please fill this in to the best of your ability and click "OK".

Your road has now been added to a layer of data that is marked as "unverified". This will be rendered and placed in the map layer that shows both verified and unverified data together. Once the new data has been verified, it will be placed in the People's Map layer.

5 Create or edit a Point of Interest (POI)

5.1 Identify a POI you wish to change or add.

You should first search for and then identify an object that you would like to map as a "Point of Interest".

5.2 Use the editing tools to add or edit the properties of a "Point of Interest" (POI)



Click on the "Add point" mode button in the editor toolbar, find the feature you want to map and click once on it with your left mouse cursor. This will add a point to the map and a dialog box will appear. Choose what type of POI this will represent, add as much detail as possible into the dialog box and click the "OK" button. Your POI will be created.

5.3 Edit the position, name and details of the Point of Interest.

New Point of Interest

Type

Name

Priority

Alias

Flat Number

House Name

House Number

Street

District

SubDistrict

Town

County

Postcode

Phone

Fax

Email

Web address

Click on the 'OK' button to finish adding the Point of Interest.

Points of Interests Attributes List

When you want to change the type and details of this point, double click on the newly created point and the dialog box will reappear. Click on the "OK" button when changes have been made. The POI can also be moved by selecting the point and dragging this to the required position.

6. Create or edit an Area/Polygon.

6.1 Identify an area you wish to change or add.

You should first identify an area in the aerial image that you are familiar with and would like to add or edit.

6.2 Use the editing tools to add an area to the map.



Click on the "Add Polygon" mode button in the editor tool bar, find the beginning of the area and click once on it with your left mouse cursor. This will add a point to the map. Follow the boundary of the area you want to map, clicking as often as necessary to represent the curves. Continue along the boundary in this manner, adding enough points so that the line you are creating fits nicely along the area in the aerial image. When you come back round to the starting point and want to create the last node, double click on this location and the polygon will complete automatically.

6.3 Provide the name and details of the area.

New Polygons

Type

Name

Priority

Alias

Flat Number

House Name

House Number

Street

District

SubDistrict

Town

County

Postcode

Click on the 'OK' button to finish adding the Polygons.

Polygons Attribute List

Once you double-click the mouse button to indicate that you have finished digitizing an area/polygon, a dialog box will pop up, prompting you to add the area details, such as what type of an area this polygon represents and the name of the area. Also select Please fill this in to the best of your ability and click "OK". The area is now created in the People's Map.

6.4 Change the position or shape of the area/polygon.

The shape of the area can be altered by selecting or moving the red nodes, or by clicking on and dragging the segment lines in between the nodes to a new location. The entire polygon can also be moved by selecting the polygon, pressing shift and drag the polygon to its desired location.

The polygon can be deleted by deleting the nodes one by one or by selecting the polygon and then pressing the delete button on the map tool bar. Another method to delete a polygon is to left click to select the polygon and then right click for a "delete object" option to appear. Select this option and the polygon will be deleted.